

# AI Subtitles: Setup

What you need to know to set up AI subtitles in LiveVoice.



With our AI Subtitles you can provide Closed Captions of any LiveVoice audio channel and Translated Subtitles in almost real time.

## What you should know first

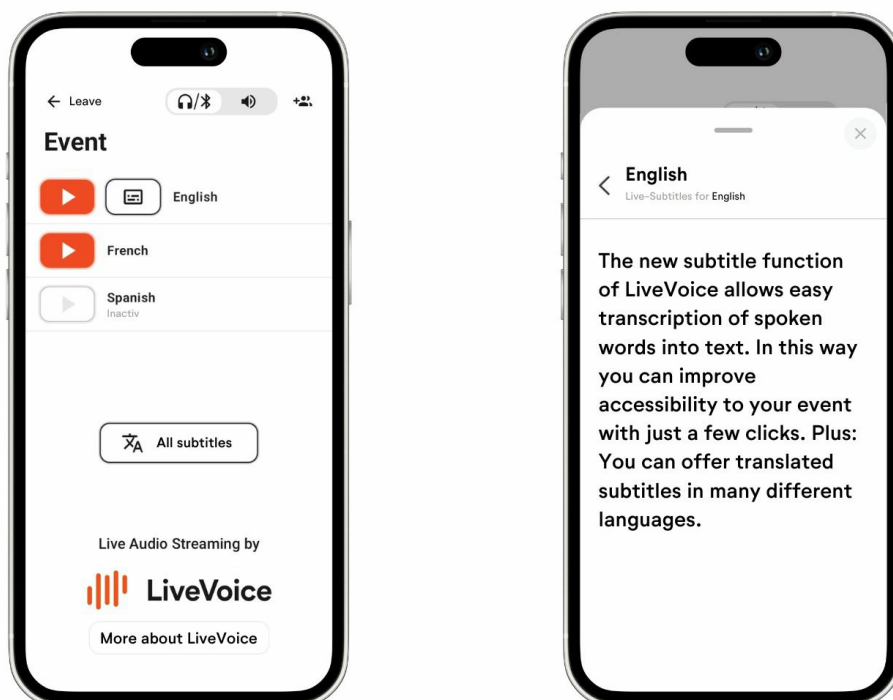
AI subtitles is a **pay-as-you go** service that you can book online **additionally** to your LiveVoice account plan (day plan or subscription). It is billed by minute and invoiced afterwards. You find the [pricing here](#).

Before you pay, you can try out the AI Services (AI Subtitles and AI Voice Translation) **each up to 20 minutes for free**. Once you have used up the free minutes, you will only be able to use AI Services if you have an active subscription or day plan. If you have added a payment method (e.g. by booking a listener plan), minutes that go beyond the free minutes will be invoiced to this payment method.

## Types of subtitles

There are two types of subtitles you can provide to your audience:

- **Original Subtitles:** Known also as **Closed Captions**, this means you can provide a live transcription of what is spoken in any audio channel.
- **Translated Subtitles:** You can translate any Original Subtitle to any of the over 60 offered languages.



## How subtitles can be displayed

You can provide subtitles to your audience in these ways:

- On attendees **smartphones** or **tablets**, using the LiveVoice mobile app
- On **computers** in the web browser, e.g. for online events
- On **large screens** at events, using the full screen mode of the web version of LiveVoice
- As **lower thirds** subtitles on large video walls or on livestreams

See examples and more on that [here](#).



## ⚙ How to set up AI subtitles

Watch this video or follow the steps below to learn how you set up automatic subtitles.

1. Create an event with at least one audio channel.
2. Go to channel settings of the channel you want to activate subtitles for.
3. Go to the tab "AI Services" and turn on the "AI Subtitles" toggle.
4. Set the spoken languages of this channel. \*
- 5.

Turn on "Original Subtitles" if you want Closed Captions for this channel.

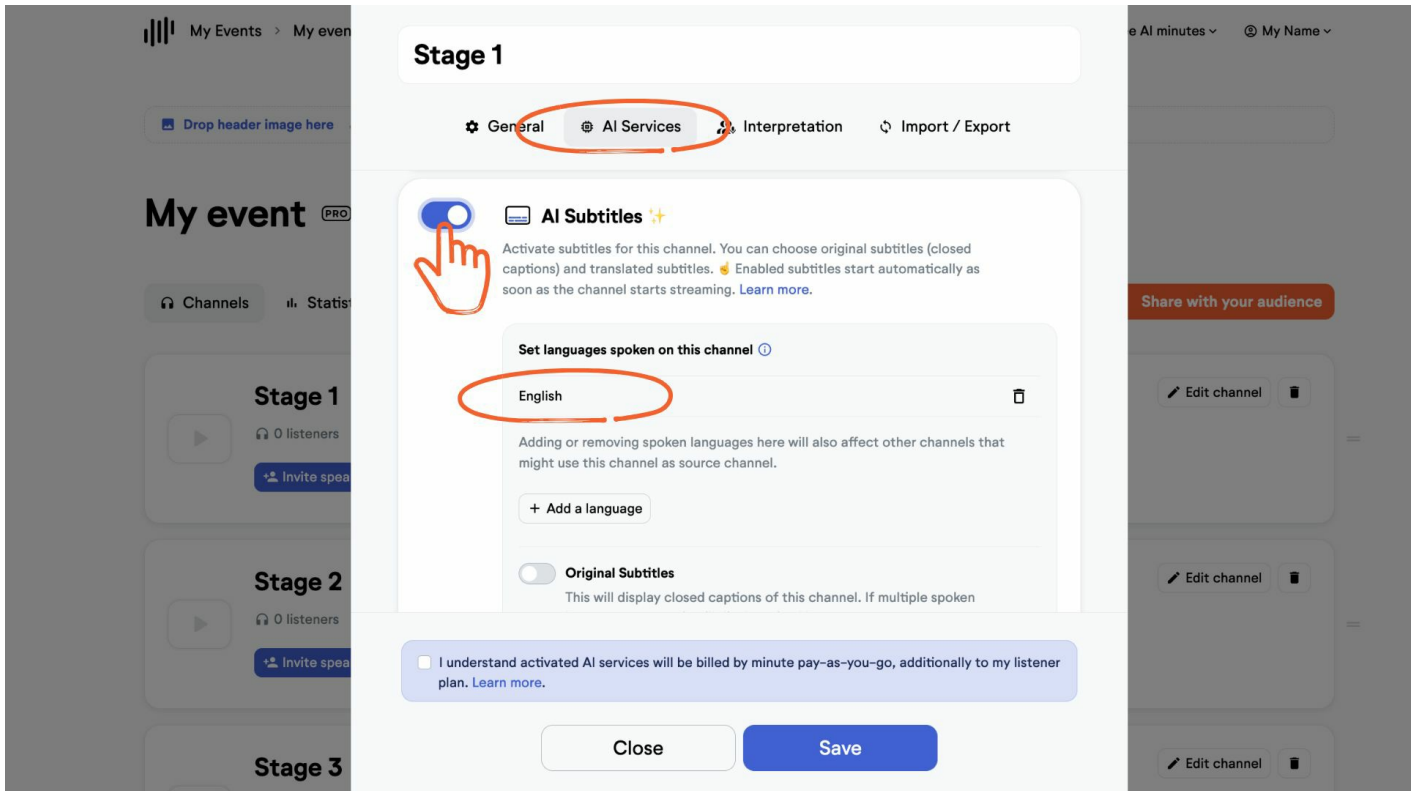
6. 6.

Turn on "Translated Subtitles" if you want to get subtitles that are translated from the source language(s).

7. 7.

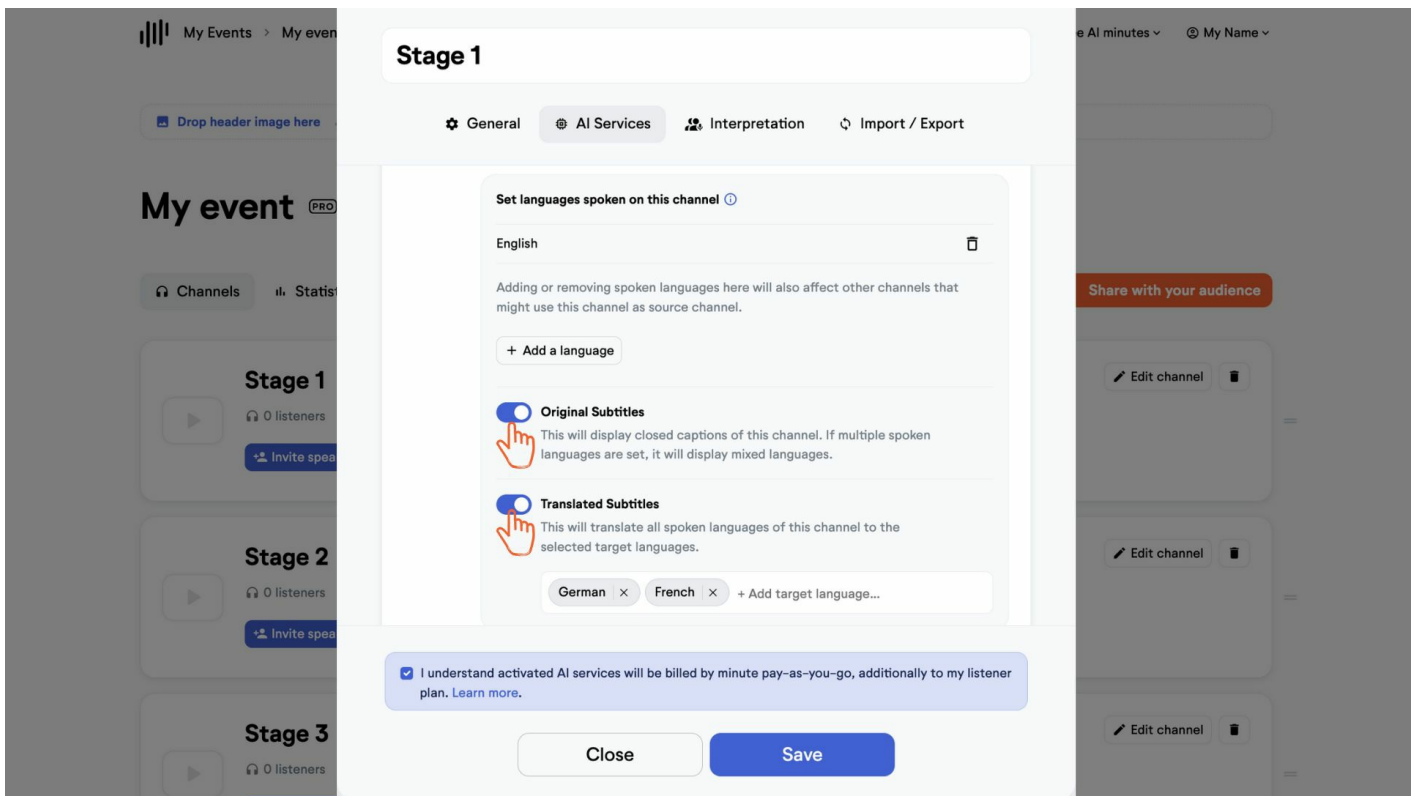
Save (you will be asked to check the box that you have understood AI features are billed by minute, in addition to your listeners plan).

\* Note: You can choose one or several source languages, depending on what languages are spoken on a channel. The more accurate you make these settings, the better the translation will be. Therefore, do not add languages you do not really need.



### Example

Stage with English Original Subtitles (Closed Captions) and German and French translated subtitles:



Subtitles will now **start as soon as a speaker starts streaming in this channel**.

## Glossary:

For SMART and PRO customers there is the option to create [glossaries](#). This allows you to enhance the AI recognition of special words like company names, and make sure that the AI translates certain words exactly the way you want. [Learn more about glossaries here](#).

## 📢 IMPORTANT NOTES:

**Costs depend on the time you are using the feature.** It will be **billed by minute**. Once a week you will get the invoice for all used minutes within that week.

Minutes **start counting** as soon as a **speaker starts a channel** that has subtitles enabled.

Any subtitles of **hidden channels** will not be displayed to the audience.