

# Automatic Floor Audio

Automatically play the original audio from stage when interpreters are not active in their channel.

[Features](#)[Live Translation](#)[Admin](#)

## Available in: PRO

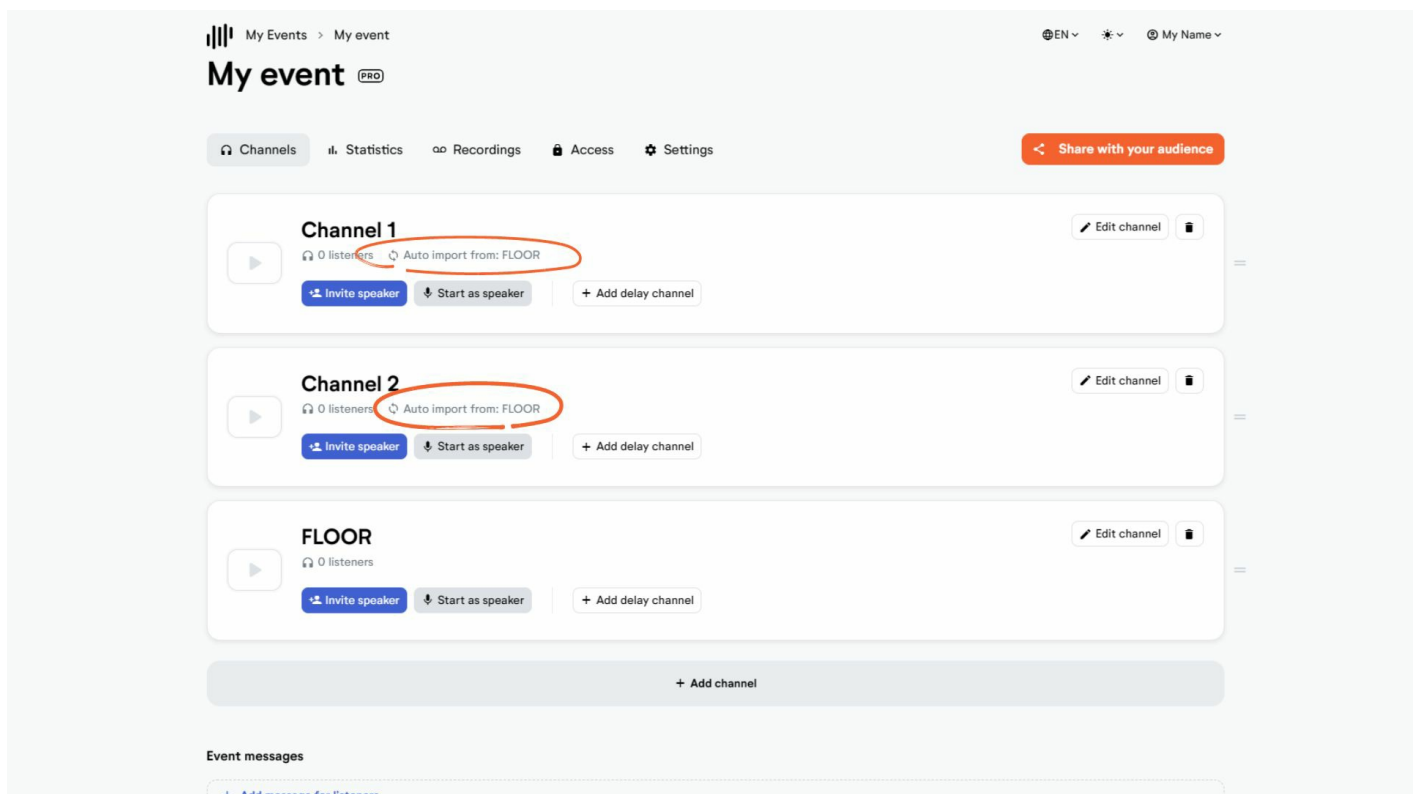
If you want to send the audio from another channel while a certain channel is not active you can do this by using this LiveVoice PRO feature.

This is also known as **Auto Floor Distribution**, meaning the original floor audio from stage is sent while an interpreter is not active. In this way, as long as an interpreter is not on air, participants will hear the original audio from stage.

## Example:

Event with English and German interpretation. Both channels will play the FLOOR channel whenever the interpreter is not active.

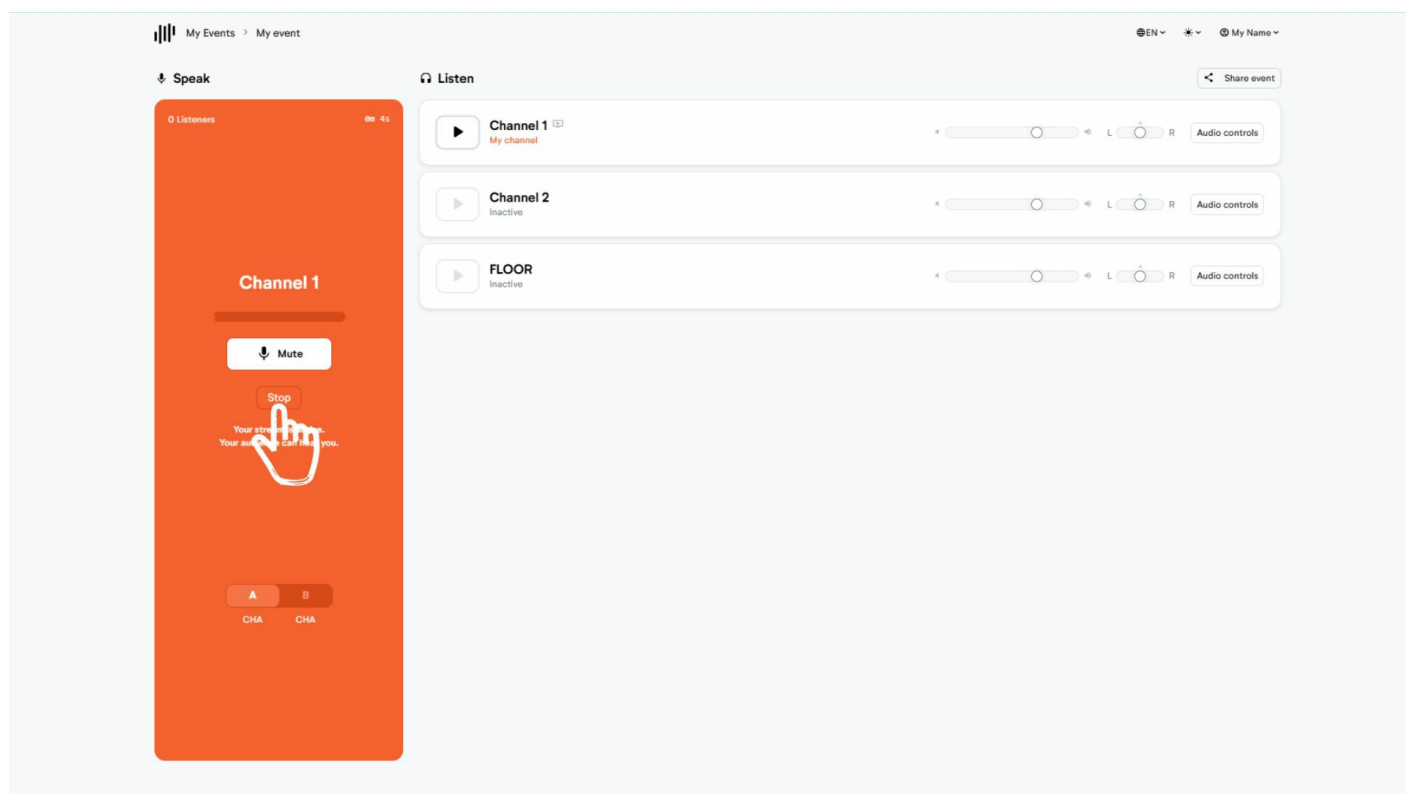
## Admin View:



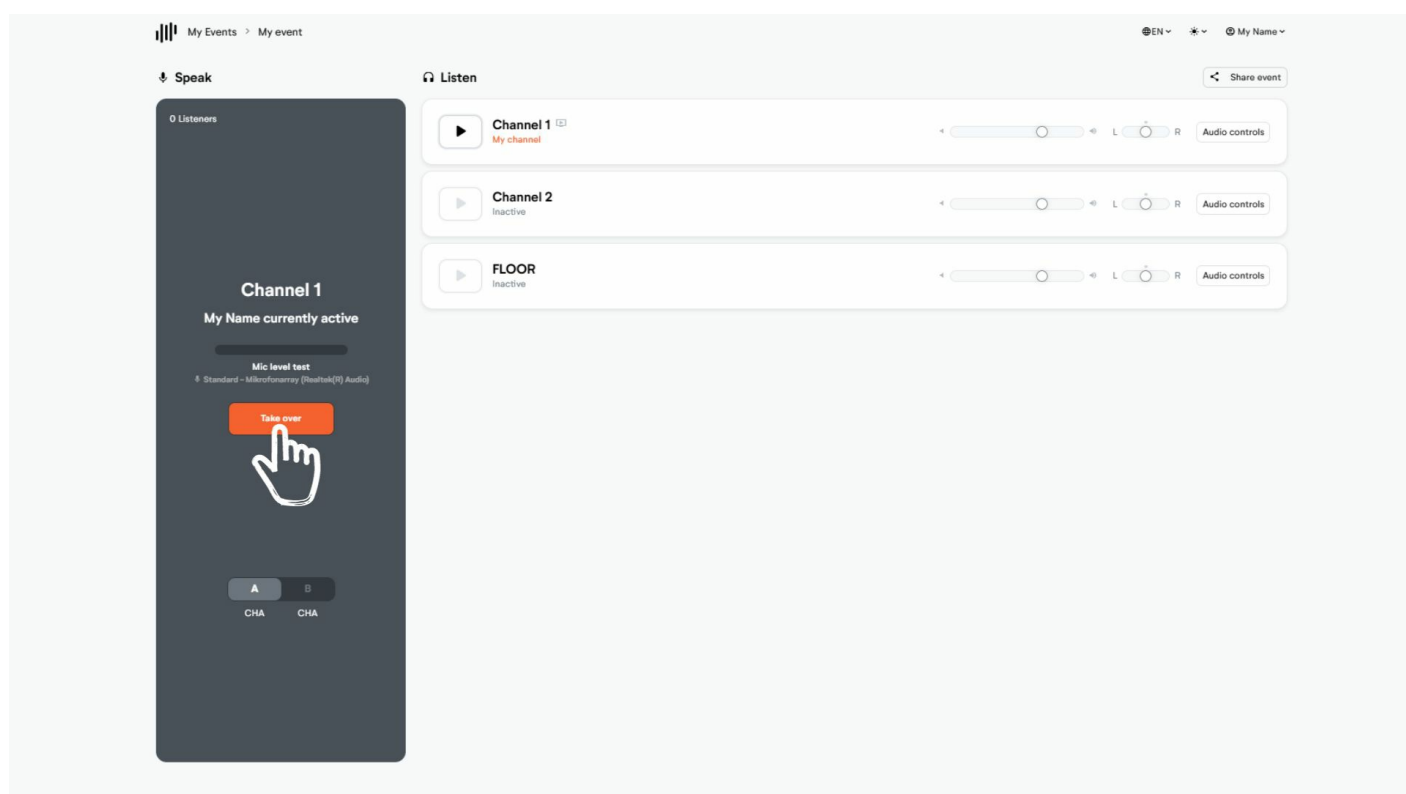
The screenshot shows the 'My event' admin interface. At the top, there's a navigation bar with 'My Events > My event', a language selector 'EN', a settings icon, and a user profile 'My Name'. Below this is a header 'My event (PRO)' and a navigation menu with 'Channels', 'Statistics', 'Recordings', 'Access', and 'Settings'. A 'Share with your audience' button is on the right. The main content area displays three channels: 'Channel 1', 'Channel 2', and 'FLOOR'. Each channel card includes a play button, a listener count (0 listeners), and an 'Auto import from: FLOOR' option, which is circled in red for Channel 1 and Channel 2. Below each channel are buttons for 'Invite speaker', 'Start as speaker', and 'Add delay channel'. At the bottom, there's a '+ Add channel' button and an 'Event messages' section with a '+ Add message for listeners' button.

## Speaker View:

Channel 1 interpreter clicks "Stop".



Now the Automatic Floor Audio is active. The interpreter sees the message "Importing from FLOOR". Whenever the interpreter wants to resume talking, he simply clicks the "Take over now" button.

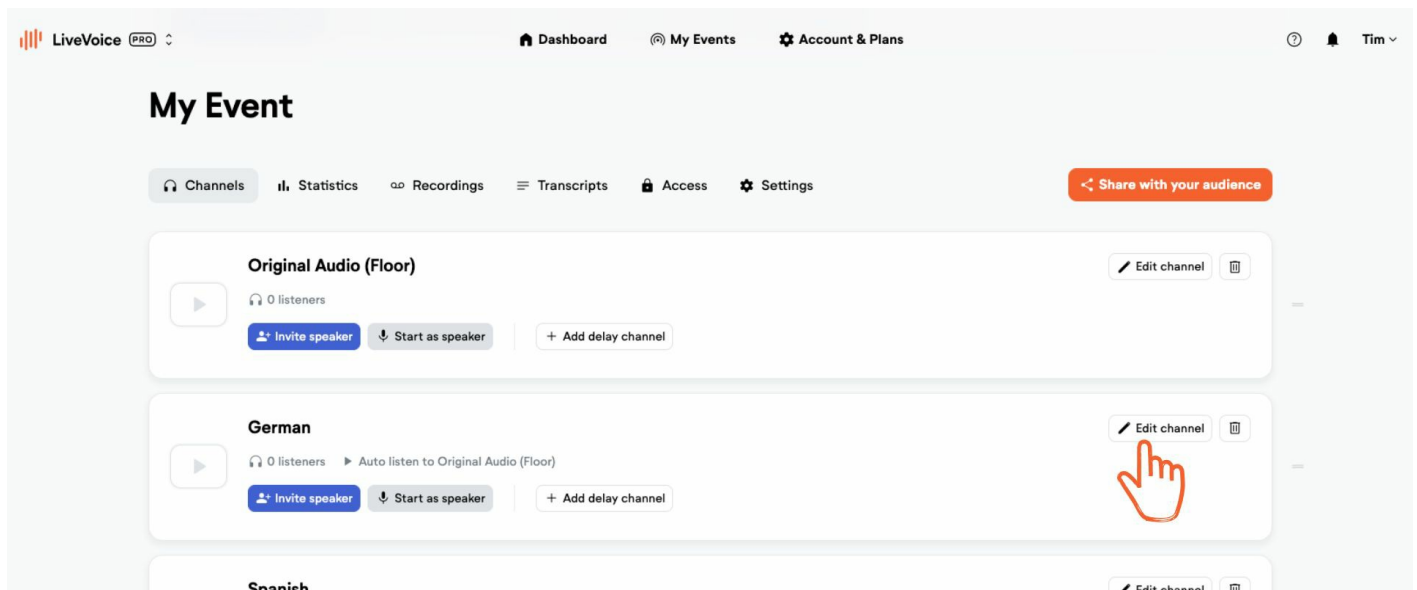


**Good to know:** This also works when setting up A/B languages and the interpreter changes his channel. As soon as the interpreter chooses the other channel, the Floor language will be played in the channel that is now in-active.

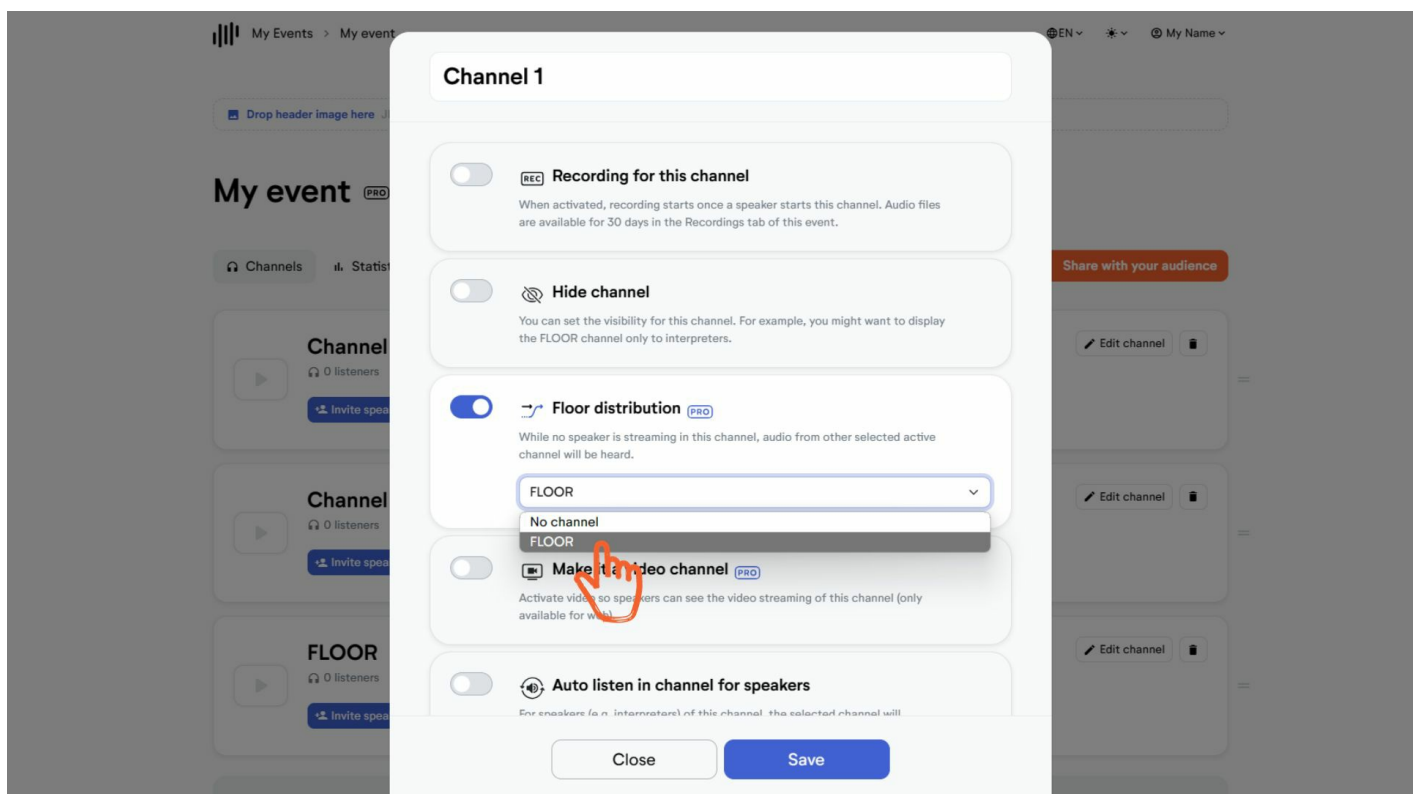
## Setup

1: Create a FLOOR channel and [ingest the original audio there](#).

2: Go to the event in your admin account and select "Edit channel".



Select the channel you want to auto distribute to this channel whenever the speaker is not active.



Repeat this for each channel you want to set the Automatic Floor Audio for.